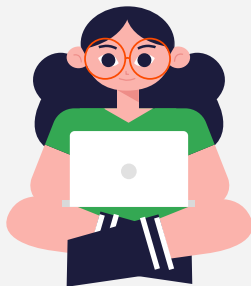


CCS School Choice Lottery




Parent Portal- From the parent's view

Start!





Step 1 Log in to IC Parent Portal

simple || powerful®

Campus Parent

Columbus City Schools

Parent Username

Password

Log In


[Forgot Password?](#) [Forgot Username?](#) [Help](#)

[Log in to Campus Student](#)

OR

[New User?](#)

Announcements



There are no district announcements.

© 2002-2022 Infinite Campus, Inc. | Version Campus 24.10.2

Step 2 get to lottery



S
I
D
E

P
A
N
N
E
L

Message Center

Today

Calendar

Assignments

Grades

Grade Book Updates

Attendance

Schedule

Fees

Documents

More

Quick Links

[Columbus City Schools](#)

[Briggs High School](#)

[Georgian Heights Elementary School](#)

[School Choice](#)

[Special Education Class Locations](#)

[Summer School](#)

[Absence Notification Form](#)

[E Sign](#)

[Career Center Application](#)

[Saturday Academy](#)

[Career Center Visit Form](#)

[View Student State ID](#)

[Transportation Opt Out](#)

[Pre K Pre Enrollment](#)

[BlendED Registration](#)



Step 3 Open School Choice Screen



1

School Choice - Frequently Asked Questions

Please review the FAQs to ensure the best service is able to be provided. These FAQs will be provided each time you enter School Choice. When you are finished with this page **Click the NEXT button at the bottom of screen** to proceed through the School Choice Application.

2

You will be taken to the school choice/selective admission platform and the open screen will be FAQ. Read through then click NEXT

3



4



Step 4 Confirm Identity



1

School Choice Application - Name Verification

Is this your name?

Jane Doe

No

Yes

2

School Choice Application - Contact Information Verification

Is this your contact information below correct?

Home Phone --

Cell Phone

Email

If your email and/or phone number is incorrect, it is imperative that you make corrections in the Parent Portal.

Notifications in regards to your child's lottery status will be made via email and automated calls to the active contact information from Campus Parent Portal.

No

Yes

3

4



Step 5 Home Screen



New

Existing

Previous

Create +

Student Id: Jack Doe

(Click to expand)

Create +

Student Id: Jill Doe

(Click to expand)

Make sure that your student names are correct. If you have never submitted a selection you will click CREATE and follow the prompts. If you have submitted a selection you will click EXISTING (located above names).



Step 6 Begin Application



What type of application would you like to submit?

Application Type Descriptions

School Choice Lottery: For students wishing to apply to attend a school other than the school assigned.

Reservation Admissions: For students who currently attend a school that is eligible to reserve a seat in the next school with the same programming.

Return to Home School: For students attending a school in Columbus City Schools that is not their school of address.

Selective Admissions: For students who have been identified as gifted and meet the additional criteria required.

Inter-District Open Enrollment: For students living outside of the Columbus City Schools boundaries and wish to attend a school in the CCS District.

Please note: Applications are available based on matching criteria provided by student data. If you think your options below are in error please contact the Division of School Choice.

JROTC



School Choice Lottery



Selective Admissions

Select one of the above options



Step 6 Clarifying Questions



Is your child eligible for Special Education Services?

No



Is your child eligible for English Learners (EL) services?

(EL was formerly known as English as a Second Language (ESL))

No



← Back

Next →

Make your selections for the above questions and then press NEXT



Step 7: Make your school choices



Choice 1, Choice 2 and Choice 3 must be different.

Choice 1

Select a school...

Choice 2

Select a school...

Choice 3

Select a school...

Back

Next

This is where you select your schools you would like to lottery into or choose for selective admissions. You have to choose at least one school. There is information below regarding what services are offered at the schools. It is also suggested to check out the [CCS School Fair Videos](#).



Step 8: Sibling Confirmation



School Choice Lottery Application - Sibling Confirmation

There may be record(s) below that indicate a sibling relationship to the school(s) applied for by I If the sibling(s) shown is not correct please click **✖ Remove** to remove the student reference. Please click **+ Add** if sibling relationships exist but are not shown in the list of schools.

Siblings

No sibling currently related.

+ Add

Back

Next



Step 9: SUBMIT APPLICATION



Application Process

Applicants who apply after the deadline shall be placed at the end of their respective waitlist in the order they are received. **If you are offered placement**, a response is needed by the deadline indicated. If a response is not received by the deadline, the application will be cancelled and the next student on the waitlist will be offered the placement. Generally, two days are given for response to subsequent offers. **Accepting an offer for a school cancels all other applications.** The seat at the previous or home school will be offered to another student. If you decline an offer and are on waitlists for your other choices, those waitlist applications remain active. Offers will be made through the first full week of September. Seat availability will be reviewed and offers made again the week following first and second mid term, the end of first quarter and the week prior to winter break. **If you change your mind about an acceptance**, you must reapply for another placement prior to the July deadline, including the student's home school by address. Your child is committed to the original accepted school until a new placement is approved. **If a student is not placed by the first day of school, the original assignment remains valid.**

Contact Information

It is imperative that parents/guardians keep their email address and phone number current in the Infinite Campus Parent Portal. All lottery offers will be communicated via the contact information on file. Offers cannot be reinstated due to missed communications.

If you have any questions before submitting please review the [School Choice FAQs](#).

Reject

Agree

Cancel



If all looks good,
AGREE!

Step 10: Application Status



New

Existing

Previous

Student Id: 2012787

Grade:09

Jaxon Mitskevich

(Click to see application status)

School Choice Lottery

Choice: Whetstone High School

Edit



[View details](#)

School Choice Lottery

Choice: Whetstone High School

Status: Submitted

Edit



[Close details](#)

Get in the habit of checking daily!
There will be a button to accept
when an offer is there!



District Resources



[CCS School Fair Videos](#)

[CCS School Choice Page](#)

[School Choice Lottery Process](#)

[Parent Portal Sign In](#)

